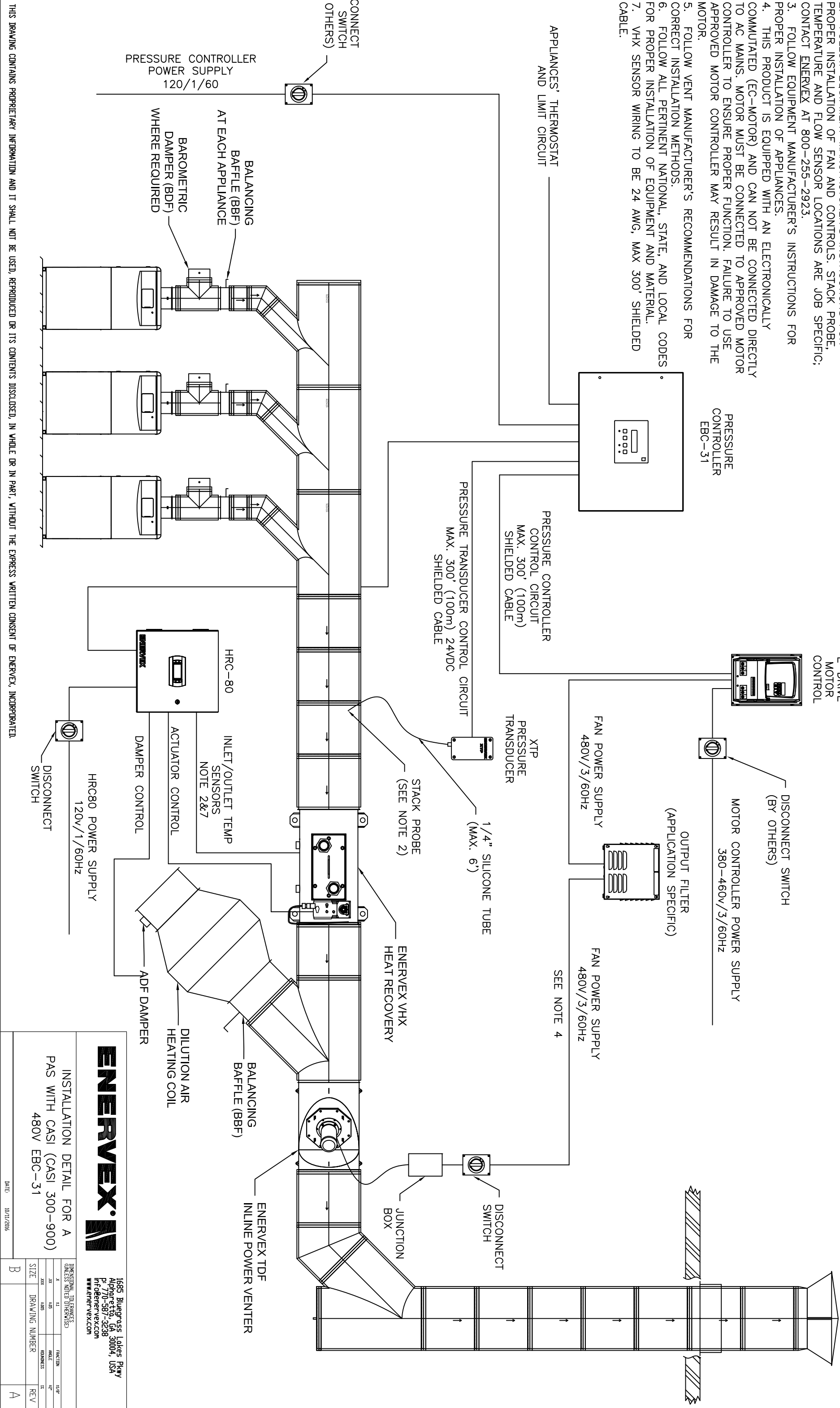


DRAWING NOTES

1. WIRING INFORMATION IS SUITABLE FOR ENERVEX VHX.
2. FOLLOW EQUIPMENT MANUFACTURER'S INSTRUCTIONS FOR PROPER INSTALLATION OF FAN AND CONTROLS. STACK PROBE, TEMPERATURE AND FLOW SENSOR LOCATIONS ARE JOB SPECIFIC; CONTACT ENERVEX AT 800-255-2923.
3. FOLLOW EQUIPMENT MANUFACTURER'S INSTRUCTIONS FOR PROPER INSTALLATION OF APPLIANCES.
4. THIS PRODUCT IS EQUIPPED WITH AN ELECTRONICALLY COMMUTATED (EC-MOTOR) AND CAN NOT BE CONNECTED DIRECTLY TO AC MAINS. MOTOR MUST BE CONNECTED TO APPROVED MOTOR CONTROLLER TO ENSURE PROPER FUNCTION. FAILURE TO USE APPROVED MOTOR CONTROLLER MAY RESULT IN DAMAGE TO THE MOTOR.
5. FOLLOW VENT MANUFACTURER'S RECOMMENDATIONS FOR CORRECT INSTALLATION METHODS.
6. FOLLOW ALL PERTINENT NATIONAL, STATE, AND LOCAL CODES FOR PROPER INSTALLATION OF EQUIPMENT AND MATERIAL.
7. VHX SENSOR WIRING TO BE 24 AWG, MAX 300' SHIELDED CABLE.



1635 Bluegrass Lakes Pkwy
Alpharetta, GA 30004, USA
P 770-587-3238
info@enervex.com
www.enervex.com

INSTALLATION DETAIL FOR A
PAS WITH CASI (CASI 300-900)

480V EBC-31

DIMENSIONAL TOLERANCES (UNLESS NOTED OTHERWISE)				FRACTION		S.I./IN	
X	Y	Z	ANGLE	XX	XX	XX	XX
XXX	XXX	XXX	XXX	XXX	XXX	XXX	XXX
SIZE	DRAWING NUMBER					REV	
B						A	